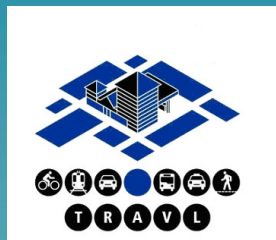


TRAVL

Trip Rate Assessment Valid for London



TRAVL

A new way to plan conference

March 11 2009

Louise Smith, MVA Consultancy

MAYOR OF LONDON





Structure

- Introduction to TRAVL
- User Statistics
- Survey Programme
- Developments with iTRACE and travel planning in London
- User Guide and Helpdesk
- Training
- Software Improvements
- Freight Software Developments
- Website



Introduction to TRAVL

Normally used by transport planners undertaking and assessing Transport Assessments and for monitoring of travel plan impacts

Role

- Multi-modal travel information - trip generation, distribution and mode share for sites in London
- To predict the number of trips associated with a land use by size based on other sites with a similar use

Other Uses

- Travel Plan Monitoring, links with iTRACE surveys (non-trip rate surveys)
- Deliveries / Freight monitoring
- Parking demand on and off site
- Origin-destination data



User Statistics

- 11 New Subscribers in 2008/09
 - 3 Boroughs, 8 Consultants
- 68 Subscribers in total
 - 29 Boroughs, 39 Consultants
- Bureau Service
 - Increased use of the Bureau Service by several smaller consultancies
 - 27 enquiries since April 2008



TRAVL Surveys Undertaken 2008/09

- **TRAVL surveys funded by subscriber funds:**
 - A1 Cafe – 2 surveys, Brent and Southwark;
 - A1 Supermarket – 1 survey - Greenwich;
 - A1 Mixed Use Commercial – 1 survey, Greenwich;
 - B1 Light Industrial – 1 survey, Richmond;
 - B2 General Industry – 2 surveys, Newham and Richmond;
 - C1 Hotel – 2 surveys, Hounslow and Camden;
 - C2 Hospital – 1 survey, Barking and Dagenham;
 - C3 Residential – 2 car-free development sites - Camden, 3 other surveys - Isle of Dogs and Westminster;
 - C3 Mixed Use Residential – 1 survey, Greenwich;
 - D2 Health Clubs & Sports Centres - 2 surveys, Brent;
 - D2 Other Use (Religious land uses) – 3 surveys, Newham and Brent;
 - D1 Health Service – 1 survey, Greenwich;
 - D2 Health Clubs and Sports Centres – 1 survey, Greenwich; and
 - SG Mini Cab Office – 1 survey, Brent.



Surveys Undertaken 2008/09

- **TRAVL surveys funded by other sources:**
 - C1 Hotel – 1 survey, Lambeth;
 - C3 Residential – 2 surveys, Greenwich and Harrow;
 - D1 Non-Residential School - 1 Primary School survey, Brent;
 - D1 Health Clubs and Sports Centres – 3 surveys, Southwark; and
 - D2 Other Use (Religious land uses) – 3 surveys, Hampton and Hounslow.



Survey Statistics

- **Number of surveys with multi-modal data:**
 - 440 surveys
- **Number of TRAVL surveys added since 2007:**
 - 55 surveys
- **iTRACE Surveys entered into TRAVL**
 - Site and staff travel survey only data for 44 surveys



Developments with iTRACE

- TRAVL can now store Travel Plan Only Data
 - Site Management Data – size, parking, travel plan elements
 - Staff Survey only data (no count/trip rate data)
 - TRAVL ideal facility to hold data for comparative use
 - Additional to normal TRAVL survey programme and opportunities for full data collection
- Electronic data exchange from iTRACE to TRAVL



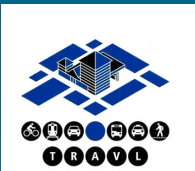
Travel Plan Monitoring Requirements

- TRAVL survey methodology and database is referenced as a requirement for travel plan monitoring in:
 - TfL 'Guidance for Workplace Travel Planning for Development' (March 2008)
 - TfL Best Practice for Residential Developments (March 2008)
- Sites over a certain size with a Planning Obligation that require a Travel Plan should monitor the Travel Plan through surveys adhering to the TRAVL Methodology
- The TRAVL Manager will:
 - Regularly review iTRACE to identify when travel plan monitoring surveys are required;
 - Maintain a quality-assured list of approved Independent Fieldwork Companies (IFC);
 - Contact the organisations, for whom travel plan monitoring surveys are required and remind them to commission surveys; and
 - Inform TRAVL Steering Group, TfL and appropriate Borough of any organisations that have not completed these surveys.



Travel Plan Data in TRAVL

- The TRAVL Manager will also:
 - Check, code, analyse and enter the data into TRAVL;
 - Manage the electronic data exchange to iTRACE:
 - Site Management Data – size, parking, travel plan elements
 - Staff Modal Splits



Travel Plan Site Comparison Report

TRAVL - Travel Plan Site Comparison

Percentage Modal Split

Mode Split % for each traveller type by distance band (miles), and for all travellers (Total). 'U' column shows results where distance is unknown.

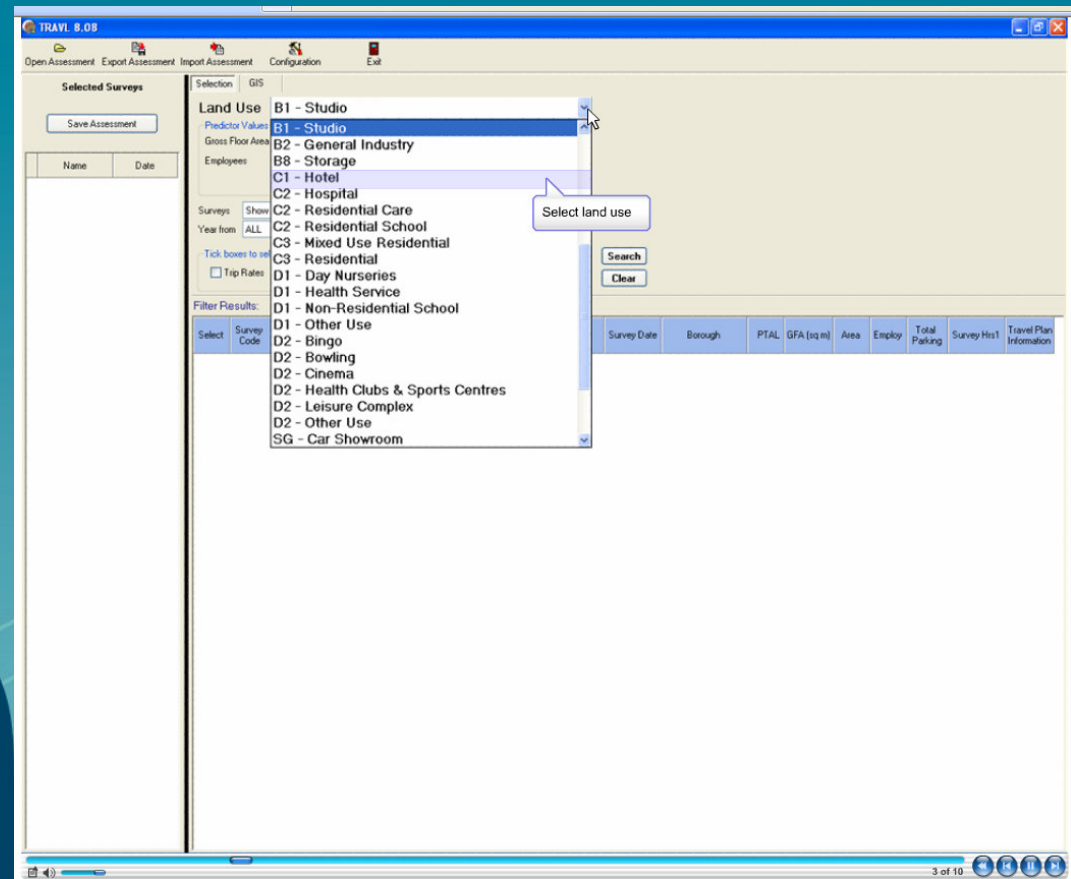
Journey to School	Weald Tertiary College, 20/10/1992							Kingston College, 17/01/2006							Difference						
	0-2	2-5	5-10	10-20	20+	-	Total	0-2	2-5	5-10	10-20	20+	-	Total	0-2	2-5	5-10	10-20	20+	-	Total
Car Driver	4.2	5.6	9.6	5.6	2.4	0	27.4	0.5	1.4	3.8	1.9	0.5	0	8	3.7	4.2	5.8	3.7	1.9	0.0	19.4
Car Passenger	1.1	3.9	1.1	0.3	0	0	6.5	0.5	0	0.9	0	0	0	1.4	0.7	3.9	0.2	0.3	0.0	0.0	5.1
Motor Cycle	0.1	0.1	0.1	0.1	0	0	0.2	0	0	0.5	0	0	0	0.5	0.1	0.1	-0.4	0.1	0.0	0.0	-0.2
Pedal Cycle	0.3	0.4	0.1	0	0	0	0.8	0.9	2.8	1.9	0	0	0	5.6	-0.7	-2.4	-1.8	0.0	0.0	0.0	-4.8
Walk	7.3	2.8	1.6	0	0	0	11.7	5.2	3.3	0.5	0.5	0	0	9.4	2.1	-0.5	1.1	-0.5	0.0	0.0	2.3
Bus	11.2	22.5	14	1.6	0	0	49.3	0.9	9.4	12.7	6.1	0.5	0.5	30	10.3	13.1	1.4	-4.5	-0.5	-0.5	19.3
Coach	0	0	0	0	0	0	0	0.9	9.4	12.7	6.1	0.5	0.5	30	-0.9	-9.4	-12.7	-6.1	-0.5	-0.5	-30.0
Underground	0	0	0	1.7	2.1	0	3.8	0	0	0	0	0.5	0	0.5	0.0	0.0	0.0	1.7	1.7	0.0	3.4
Rail	0	0	0.1	0.1	0	0	0.2	0	0	3.3	10.3	0.9	0	14.6	0.0	0.0	-3.2	-10.2	-0.9	0.0	-14.4
Taxi	0.1	0	0	0	0	0	0.1	0	0	0	0	0	0	0	0.1	0.0	0.0	0.0	0.0	0.0	0.1
Total	24.3	35.3	26.5	9.4	4.6	0	100	8.9	26.3	36.2	24.9	2.8	0.9	100							

Journey to Work	Weald Tertiary College, 20/10/1992							Kingston College, 17/01/2006							Difference						
	0-2	2-5	5-10	10-20	20+	-	Total	0-2	2-5	5-10	10-20	20+	-	Total	0-2	2-5	5-10	10-20	20+	-	Total
Car Driver	5.1	30.5	30.5	5.1	10.2	0	81.2	1.6	8.3	10.9	8.3	4.7	0	33.9	3.5	22.1	19.5	-3.3	5.5	0.0	47.4
Car Passenger	1	5.1	1	0	0	0	7.1	0	1.6	0	0	0	0	1.6	1.0	3.5	1.0	0.0	0.0	0.0	5.5
Motor Cycle	0	0	0	0	0	0	0	0	0	0.5	0	0	0	0.5	0.0	0.0	-0.5	0.0	0.0	0.0	-0.5
Pedal Cycle	0.5	0.5	0	0	0	0	1	4.2	6.3	3.1	0	0	0	13.5	-3.7	-5.7	-3.1	0.0	0.0	0.0	-12.5
Walk	3.6	0.5	0	0	0	0	4.1	9.4	5.2	0	0	0	0	14.6	-5.8	-4.7	0.0	0.0	0.0	0.0	-10.5
Bus	0.5	1	1	0	0	0	2.5	1.6	6.3	6.3	0.5	0	0	14.6	-1.1	-5.2	-5.2	-0.5	0.0	0.0	-12.0
Coach	0	0	0	0	0	0	0	1.6	6.3	6.3	0.5	0	0	14.6	-1.6	-6.3	-6.3	-0.5	0.0	0.0	-14.6
Underground	0	0	0	0	1	0	1	0	0	0	0	0	0	0	0.0	0.0	0.0	0.0	1.0	0.0	1.0
Rail	0	0.5	1	1	0.5	0	3	0	1	3.1	2.1	0.5	0	6.8	0.0	-0.5	-2.1	-1.1	0.0	0.0	-3.7
Total	10.7	38.1	33.5	6.1	11.7	0	100	18.2	34.9	30.2	11.5	5.2	0	100							



Helpdesk and User Guide

- User Guide – PDF and electronic versions available on TRAVL Website and in TRAVL Software
- Flash Demonstrations – to guide users on how to use TRAVL





Training

- Successful training sessions held in June and October 2008
- TRAVL manager expected to hold further sessions in May and September 2009 (confirmation of dates to be announced)
- Sessions include an introduction to TRAVL, surveys selection, and how to use TRAVL, along with a question and answers and 'hands on' session
- Will be announced on TRAVL website nearer the time



Software Improvements

- Latest version (8.09) released in December 2008:
 - Included improvements to the Trip Count By Mode and Time report;
 - Counts by Walk/PT were split between walk, bus, tube and train for all post 2007 surveys; and
 - Presentation improvements were made to the reports.
- Next release intentions (8.10): By end March 2009
 - Include recent surveys;
 - Include freight software developments, freight surveys and specific freight reports; and
 - Include construction site surveys.



Improvement to Trip Count Report

New Features:

- It is possible to see counts by every mode of transport incl. Tram, DLR and Park & Ride, for example;
- Counts by Walk/PT have now been split between walk, bus, tube and train; and
- Presentation Improvements.

TRAVL - Trip Count by Mode and Time

Address: Eccleston Place
 25 Eccleston Place, London
 Victoria
 SW1W 9NF

Business: TfL Offices
 Class: B1 - Office
 Location: Central
 Gross Floor Area (sq m): 100
 PTAL: 6
 No. parked vehicles at start: 0

SurveyCode: 512
 Survey Date: 26/03/2007

Time	Car Drivers		Car Passengers		Motorbike		Bike		Taxi Users		Bus		Tube		Train		Walk		Walk/PT		Coach/Par		Park & Ride		DLR		Tram		River Boat		Unknown		Other		Total	
	In	Out	In	Out	In	Out	In	Out	In	Out	In	Out	In	Out	In	Out	In	Out	In	Out	In	Out	In	Out	In	Out	In	Out	In	Out	In	Out	In	Out		
07:00-07:30							1				1	2					12	1																16	1	
07:30-08:00							2				2	2					18	1																24	1	
08:00-08:30	1						4				6	1	6	1	1		60	5															68	7		
08:30-09:00	2		1		1		7	1			10	1	11	1	1		86	7															119	10		
09:00-09:30	1						6	1			7	1	8	1	1		60	9															82	12		
09:30-10:00	1						3	1			3	1	4	1			31	7															42	10		
10:00-10:30	1						2	1			3	1	3	1			24	9															33	12		
10:30-11:00							2	1			2	2	3	2			21	14															28	19		
11:00-11:30	1						3	1			3	1	4	1			31	11															42	14		
11:30-12:00							1	1			1	1	2	1			13	10															17	13		
12:00-12:30	1	2					2	6			3	7	3	9		1	26	67															34	92		
12:30-13:00	1	1					3	4			4	5	5	6		1	38	46															51	63		



Freight Software Development

- Aims:
 - To collect information to enable assessment of the impact of freight vehicles; and
 - Inform Delivery and Servicing Plans and Construction Logistics Plans.
- Report Examples:
 - Freight Trip Rate by Mode and Time;
 - Daily trips by mode, time and purpose (Delivery/Collection/Servicing/Waste);
 - Origin - Destination Information;
 - Waiting Location by Time; and
 - Description of Goods, Arrival time, vehicle type, goods carried.



TRAVL Website

- Restructure of layout - to improve navigation of the website;
- Suggestion button for future surveys;
- TRAVL and iTRACE Survey Forms – for travel monitoring purposes;
- List of TRAVL Approved Independent Fieldwork Companies;
- Document descriptions;
- Research reports for residential trip rates and freight trip rates; and
- User Guide Section - Flash Demonstration presentations.



Thank you



MAYOR OF LONDON





Contact us

Rob Kidd (London Councils Project Manager)

Email: rob.kidd@londoncouncils.gov.uk

Mike Slinn (TRAVL Project Director, Director at MVA Consultancy)

Email: mslinn@mvaconsultancy.com

Louise Smith (TRAVL Project Manager, Senior Consultant at MVA Consultancy)

Email: lsmith@mvaconsultancy.com

Tel: 01483 742956